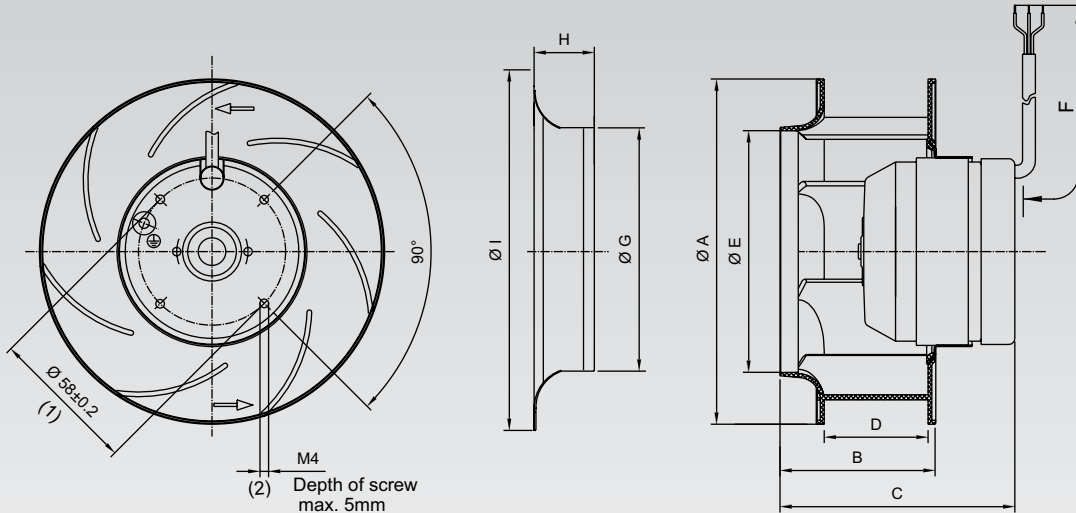




Backward Curved Fans



Only for BCF-315, 355 & 400
(1) $\varnothing 90$
(2) M6 and Depth of screw
max.12mm

Dimensions (mm)

Model	A	B	C	D	E	F	G	H	I
BCF - 133	133	60	90.5	40	93	660	87	13	129
BCF - 175	175	62	69	42.4	131	660	125	14	170
BCF - 190	190	61.5	68.5	44.6	133	660	125	14	170
BCF - 220	222.5	64	71	44	161.5	660	156.2	21	252
BCF - 225AA	225	63.8	69	38	153	660	145	28	223
BCF - 225BB	225	89	101	62.5	154	500	145	28	223
BCF - 250	251	85.3	99	56.6	174	550	167	33	255
BCF - 315	315	138	176.5	90	220	450	210	27	300
BCF - 355	355	148	186.5	95	280	490	239	31	350
BCF - 400	400	146	184.5	95	270	450	255	58	370

Specifications

Model	Size mm	Phase	Voltage (VAC)	Frequency (Hz)	Current (A)	Power (W)	Speed (RPM)	Airflow (M ³ /hr)	Noise dBA	Cap μ f/450V	wt Kg
BCF - 133	$\varnothing 133 \times 60$	Single	230	50/60	0.20/0.20	33/33	2550/2780	220/230	60/62	-	1.0
BCF - 175	$\varnothing 175 \times 62$	Single	230	50/60	0.39/0.34	61/62	2350/2200	440/420	63/62	-	1.2
BCF - 190	$\varnothing 190 \times 62$	Single	230	50/60	0.39/0.48	87/109	2600/2900	570/630	68/71	3	1.6
BCF - 220	$\varnothing 220 \times 64$	Single	230	50/60	0.4/0.50	95/120	2400/2600	800/865	69/71	3	2.7
BCF - 225AA	$\varnothing 225 \times 64$	Single	230	50/60	0.53/0.64	110/145	2650/2950	860/950	72/75	3	2.4
BCF - 225BB	$\varnothing 225 \times 89$	Single	230	50/60	0.80/0.86	147/195	2680/3100	1200/1350	74/78	5	2.7
BCF - 250	$\varnothing 250 \times 86$	Single	230	50/60	0.76/1.08A	173/245	2600/2790	1400/1460	75/76	5	3.0
BCF - 315	$\varnothing 315 \times 138$	Single	230	50	0.65	140	1380	1550	64	4	4.5
BCF - 355	$\varnothing 355 \times 148$	Single	230	50	0.83	180	1380	2250	66	6	5.6
BCF - 400	$\varnothing 400 \times 146$	Single	230	50	1.09	240	1365	2600	68	8	6.8

Available in DC Voltages
Few sizes available in 3 Phase

Specifications subject to change without notice