



# Technical Catalogue

**Power Electronics**



**250k** sq ft.  
PRODUCTION AREA



**15**million  
MOTORS/YEAR



**200+**  
POINT OF SALES



EXPORT TO  
**20+**  
COUNTRIES



**1000+**  
CUSTOMERS





## Performance with Purpose

Founded in 1988, Hicool is a leading manufacturer of motors, fans and blowers serving diverse markets and covering the entire scope of air moving technology and thermal solutions.

Our highly skilled team are driven every single day to create tailor-made solutions for complex applications in different industries. Our engineers are passionate about working very closely with our customers to meet their exact requirements in the most cost-effective way.

By having full control of our process chain, we are able to deliver unrivalled quality products with superior lifespans and reliability.

Hicool products enhance operational efficiency, save energy and improve customer product and equipment lifetime by providing the desired amount of temperature control.

With three state of the art manufacturing facilities and a yearly capacity of over 15 million motors we are able to cater to the rising demand of climate and temperature control products.

Do contact us for tailor-made solutions for your needs.

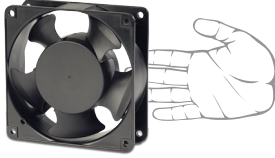


## What is Ingress Protection

Ingress protection ratings or IP ratings, refer to the level of protection offered by an electrical enclosure, against solids and liquids.

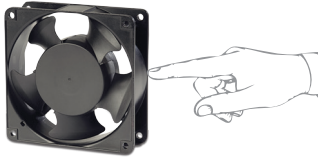
### SOLIDS

1



Protected against a solid object greater than 50mm such as hand

2



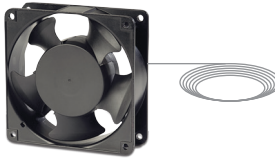
Protected against a solid object greater than 12.5mm such as finger

3



Protected against a solid object greater than 2.5mm such as a screwdriver

4



Protected against a solid object greater than 1mm such as a wire

5



Dust protected, limited ingress of dust permitted. Will not interfere with operation of the equipment. Two to eight hours

6



Dust tight, no ingress of dust. Two to eight hours

### IP Ratings Explained

E.g. IP **4** **4**

The first digit (4) represents the protection against solid objects and the second number (4), against water

### WATER

1



Protected against vertically falling drop of water. Limited ingress permitted. Duration 10 minutes

2



Protected against vertically falling drops of water with Fan tilted up to 15 degrees from the vertical. Duration 10 minutes, shall have no harmful effect.

3



Protected against sprays of water up to 60 degrees from the vertical. Duration 5 minutes, shall have no harmful effect.

4



Protected against water splashed from all directions. Duration 5 minutes, shall have no harmful effect.

5



Protected against jets of water. Duration 3 minutes, shall have no harmful effect.

6



Water projected from powerful source shall not enter the enclosure in harmful effect.

7



Protection against the effects of immersion in water between 15cm and 1 meter for 30 minutes

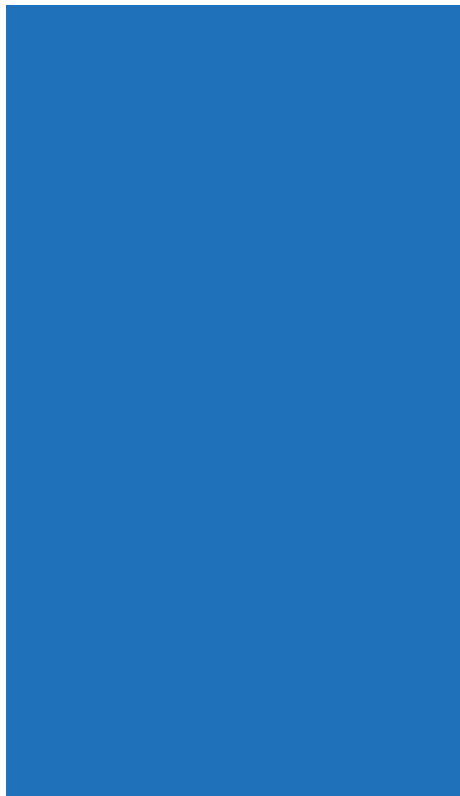
8



Protection against the effects of immersion in water under pressure for long periods













# Compact Fans - AC

## Compact Fans - AC



Model	Bearing	Voltage (VAC)	Frequency (Hz)	Current (A)	Speed (RPM)	Power (W)	Air Flow (CFM)	Static Pressure (mm H <sub>2</sub> O)	Noise (dBA)	Wt. kg
-------	---------	---------------	----------------	-------------	-------------	-----------	----------------	---------------------------------------	-------------	--------

### 80X80X25mm (Pack size: 50 No's)

8A115HBAC	Ball	115	50/60	0.210/0.180	2300/2800	14/12	21/25	4/4.8	29/34	12
8A115HSAC	Sleeve	115	50/60	0.210/0.180	2300/2800	14/12	21/25	4/4.8	29/34	12
8A230HBAC	Ball	230	50/60	0.070/0.060	2300/2800	14/12	21/25	4/4.8	29/34	12
8A230HSAC	Sleeve	230	50/60	0.070/0.060	2300/2800	14/12	21/25	4/4.8	29/34	12

### 92X92X25mm (Pack size: 50 No's)

9A115HBAC	Ball	115	50/60	0.210/0.180	2300/2800	14/14	36/42	5/6	36/38	15
9A115HSAC	Sleeve	115	50/60	0.210/0.180	2300/2800	14/14	36/42	5/6	36/38	15
9A230HBAC	Ball	230	50/60	0.070/0.060	2300/2800	14/12	36/42	5/6	36/38	15
9A230HSAC	Sleeve	230	50/60	0.070/0.060	2300/2800	14/12	36/42	5/6	36/38	15

### 120X120X38mm (Pack size: 40 No's)

12A24HBAC	Ball	24	50/60	1/0.9	2650/2800	18/17	95/102	8.4/9.4	43/46	20
12A24HSAC	Sleeve	24	50/60	1/0.9	2650/2800	18/17	95/102	8.4/9.4	43/46	20
12A115HBAC	Ball	115	50/60	0.200/0.180	2650/2800	14/12	95/102	8.4/9.4	43/46	20
12A115HSAC	Sleeve	115	50/60	0.200/0.180	2650/2800	14/12	95/102	8.4/9.4	43/46	20
12A230HBAC	Ball	230	50/60	0.100/0.090	2650/2800	18/17	95/102	8.4/9.4	43/46	20

#### Note:

- Weight mentioned is for the pack size.
- Ask for Low Noise versions

Specifications subject to change without notice

## Compact Fans - AC



Model	Bearing	Voltage (VAC)	Frequency (Hz)	Current (A)	Speed (RPM)	Power (W)	Air Flow (CFM)	Static Pressure (mm H <sub>2</sub> O)	Noise (dBA)	Wt. kg
-------	---------	---------------	----------------	-------------	-------------	-----------	----------------	---------------------------------------	-------------	--------

12A230HSAC	Sleeve	230	50/60	0.100/0.090	2650/2800	18/17	95/102	8.4/9.4	43/46	20
12A415HBAC	Ball	415	50/60	0.070/0.060	2650/2800	20/20	95/102	8.4/9.4	43/46	20
12A415HSAC	Sleeve	415	50/60	0.070/0.060	2650/2800	20/20	95/102	8.4/9.4	43/46	20

### 172 Φ x150x51mm & 172x172x55mm (Pack size: 20 No's)

17A115HBAC	Ball	115	50/60	0.450/0.450	2600/2750	41/38	190/235	16/21	52/55	20
17A115HSAC	Sleeve	115	50/60	0.450/0.450	2600/2750	41/38	190/235	16/21	52/55	20
17A230HBAC	Ball	230	50/60	0.250/0.245	2600/2750	38/37	190/235	16/21	52/55	20
17A230HSAC	Sleeve	230	50/60	0.250/0.245	2600/2750	38/37	190/235	16/21	52/55	20
17A415HBAC	Ball	415	50/60	0.125/0.125	2600/2750	38/38	190/235	16/21	52/55	20
17A415HSAC	Sleeve	415	50/60	0.125/0.125	2600/2750	38/38	190/235	16/21	52/55	20

### 220 Φ X60mm & 220X220X60mm (Pack size: 10 No's)

22A115HBAC	Ball	115	50	0.640	2300	50	360	23	56	16
22A115HSAC	Sleeve	115	50	0.640	2300	50	360	23	56	16
22A115HBAC-X	Ball	115	50	0.650	2600	55	430	28	56	16

#### Note:

- Weight mentioned is for the pack size.
- Ask for Low Noise versions
- 17A and 22A models available in square and round casings

Specifications subject to change without notice



## Compact Fans - AC

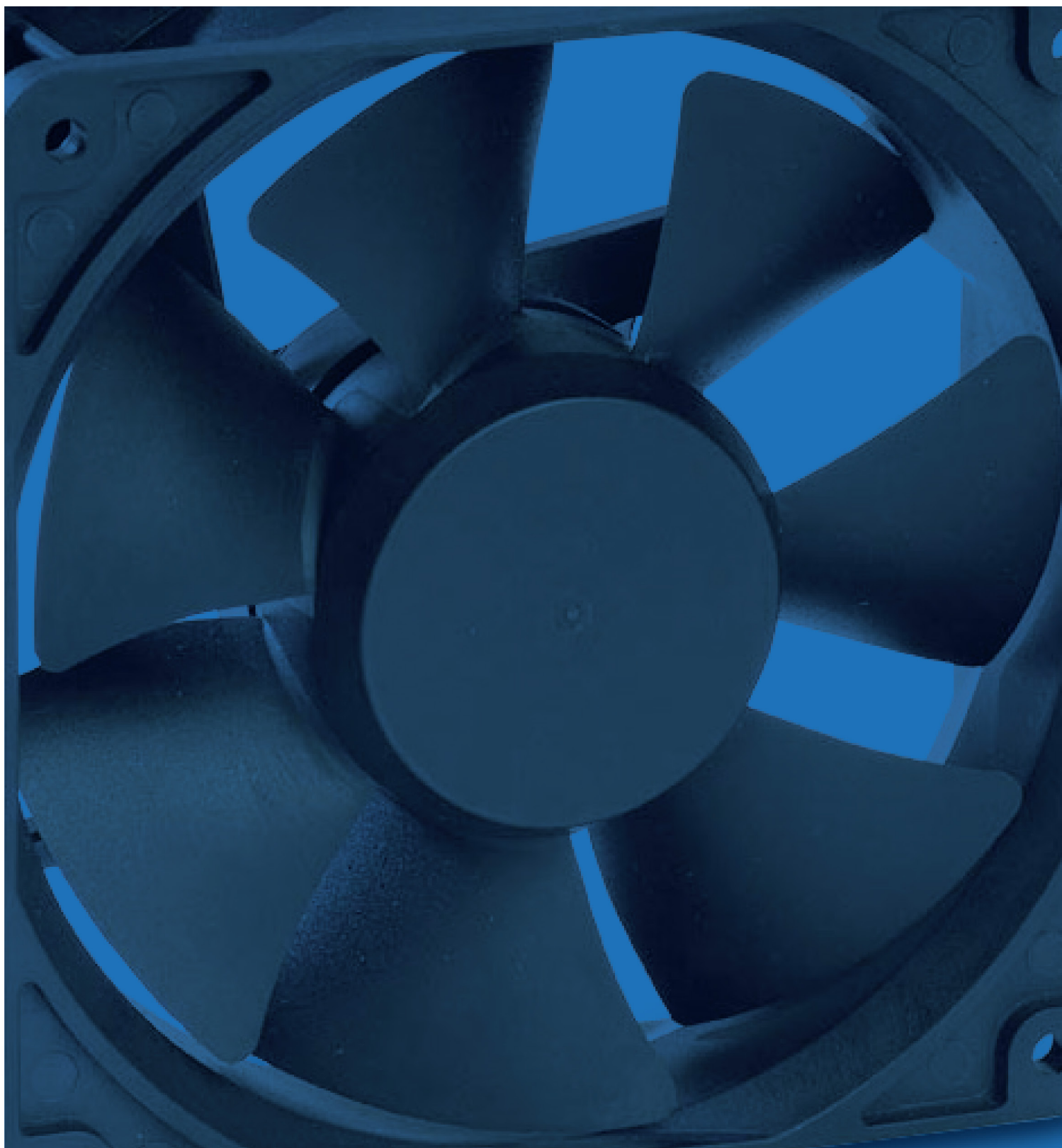


Model	Bearing	Voltage (VAC)	Frequency (Hz)	Current (A)	Speed (RPM)	Power (W)	Air Flow (CFM)	Static Pressure (mm H <sub>2</sub> O)	Noise (dBA)	Wt. kg
22A115HBAC-X-6H	Ball	115	60	0.700	2600	55	430	28	56	16
22A230HBAC	Ball	230	50	0.320	2300	50	360	23	56	16
22A230HSAC	Sleeve	230	50	0.320	2300	50	360	23	56	16
22A230HSAC-X	Sleeve	230	50	0.32	2600	55	430	28	56	16
22A230HSAC-X-6H	Sleeve	230	60	0.40	2700	60	450	29	57	16
22A230HBAC-X	Ball	230	50	0.32	2600	55	430	28	56	16
22A230HBAC-X-6H	Ball	230	60	0.40	2700	60	450	29	57	16
22A415HBAC	Ball	415	50	0.200	2300	50	360	23	56	16
22A415HSAC	Sleeve	415	50	0.200	2300	50	360	23	56	16
22A415HSAC-X	Sleeve	415	50	0.160	2600	50	430	28	56	16
22A415HBAC-X	Ball	415	50	0.160	2600	50	430	28	56	16

**Note:**

- Weight mentioned is for the pack size.
- Ask for Low Noise versions
- 17A and 22A models available in square and round casings

Specifications subject to change without notice



# Compact Fans - EC



## Compact Fans - EC



Model	Bearing	Voltage (VAC)	Frequency (Hz)	Current (A)	Speed (RPM)	Power (W)	Air Flow (CFM)	Static Pressure (mm H <sub>2</sub> O)	Noise (dBA)	Wt. kg
-------	---------	---------------	----------------	-------------	-------------	-----------	----------------	---------------------------------------	-------------	--------

### 120X120X38mm (Pack size: 40 No's)

12P115HBEC	Ball	115	50/60	0.5	2600	5.5	95	7	43	11
12P115HSEC	Sleeve	115	50/60	0.5	2600	5.5	95	7	43	11
12P230HBEC	Ball	230	50/60	0.4	2600	5.5	95	7	43	11
12P230HSEC	Sleeve	230	50/60	0.4	2600	5.5	95	7	43	11
12P230HBEC-1X	Ball	230	50/60	0.05	2900	5.5	105	7	43	11
12P230HSEC-1X	Sleeve	230	50/60	0.05	2900	5.5	105	7	43	11
B12038230H	Ball	230	50/60	0.250	4500	30	243	29.2	64	11

### 172X150X51mm (Pack size: 20 No's)

17A115HBEC	Ball	115	50/60	0.14	2600	12	190	16	52	20
17A115HSEC	Sleeve	115	50/60	0.14	2600	12	190	16	52	20
17A230HBEC	Ball	230	50/60	0.11	2600	12	190	16	52	20
17A230HSEC	Sleeve	230	50/60	0.11	2600	12	190	16	52	20

### 220X60mm (Pack size: 10 No's)

22A115HBEC	Ball	115	50/60	0.22	2500	22	405	24	56	16
22A230HBEC	Ball	230	50/60	0.17	2500	22	405	24	56	16

#### Note:

■ 17A and 22A fan models are non-standard and custom-made to order.

■ Weight mentioned is for the pack size.



# Compact Fans - DC Brushless



## Compact Fans - DC Brushless



Model	Bearing	Voltage (VDC)	Current (A)	Speed (RPM)	Power (W)	Air Flow (CFM)	Static Pressure (mm H <sub>2</sub> O)	Noise (dBA)	Wt. kg
-------	---------	---------------	-------------	-------------	-----------	----------------	---------------------------------------	-------------	--------

### 50X50X15mm / 50X50X20mm (Pack size: 200 No's)

5P12HSDC-15	Sleeve	12	0.140	6000	1.68	18.80	6.80	37.20	10
5P12HSDC-15	Sleeve	12	0.150	7600	1.8	21.00	12.20	40.00	10
5P24HBDC-20	Ball	24	0.150	7500	3.6	20.50	12.20	40.00	10

### 60X60X25mm (Also available 60X60X15mm and 60X60X20mm) (Pack size: 200 No's)

6P12HSDC	Sleeve	12	0.110	4300	1.32	18	3.8	33	10
6P12HBDC	Ball	12	0.080	4300	0.96	18	3.8	33	10
6P12HSDC-X	Sleeve	12	0.120	5000	1.44	21	4.0	35	10
6P12HBDC-X	Ball	12	0.120	5000	1.44	21	4.0	35	10
6P12HSDC-1X	Sleeve	12	0.130	6000	1.56	32	8.5	41	10
6P12HBDC-1X	Ball	12	0.130	6000	1.56	32	8.5	41	10
6P24HSDC	Sleeve	24	0.060	4300	1.44	18	3.8	33	10

**Additional Features - Fan Failure Alarm ■ Alarm Signal For Speed Monitoring ■ PWM ■ Higher Air Flow ■ Non-standard voltages ■**

**Note:**

- Weight mentioned is for the pack size.
- 17A and 22A models available in square and round casings

## Compact Fans - DC Brushless



Model	Bearing	Voltage (VDC)	Current (A)	Speed (RPM)	Power (W)	Air Flow (CFM)	Static Pressure (mm H <sub>2</sub> O)	Noise (dBA)	Wt. kg
-------	---------	---------------	-------------	-------------	-----------	----------------	---------------------------------------	-------------	--------

**60X60X25mm (Also available 60X60X15mm and 60X60X20mm) (Pack size: 200 No's)**

6P24HBDC	Ball	24	0.060	4300	1.44	18	3.8	33	10
6P24HSDC-X	Sleeve	24	0.065	5000	1.56	21	4.0	35	10
6P24HBDC-X	Ball	24	0.065	5000	1.56	21	4.0	35	10
6P24HSDC-1X	Sleeve	24	0.070	6000	1.68	32	8.5	41	10
6P24HBDC-1X	Ball	24	0.070	6000	1.68	32	8.5	41	10

**80X80X25mm (Available upto 58 CFM) (Pack size: 200 No's)**

8P12HSDC-L	Sleeve	12	0.120	3000	1.44	39	3.8	32	15
8P12HBDC-L	Ball	12	0.120	3000	1.44	39	3.8	32	15
8P12HSDC-X	Sleeve	12	0.140	3200	1.68	41	4.5	33	15
8P12HBDC-X	Ball	12	0.140	3200	1.68	41	4.5	33	15
8P12HSDC-1X	Sleeve	12	0.150	3600	1.80	47	4.8	38	15
8P12HBDC-1X	Ball	12	0.150	3600	1.80	47	4.8	38	15
8P24HSDC-L	Sleeve	24	0.060	3000	1.44	39	3.8	32	15
8P24HBDC-L	Ball	24	0.060	3000	1.44	39	3.8	32	15
8P24HSDC-X	Sleeve	24	0.085	3200	2.04	41	4.5	33	15

**Additional Features - Fan Failure Alarm ■ Alarm Signal For Speed Monitoring ■ PWM ■ Higher Air Flow ■ Non-standard voltages ■**

**Note:**

- Weight mentioned is for the pack size.
- 17A and 22A models available in square and round casings

## Compact Fans - DC Brushless



Model	Bearing	Voltage (VDC)	Current (A)	Speed (RPM)	Power (W)	Air Flow (CFM)	Static Pressure (mm H <sub>2</sub> O)	Noise (dBA)	Wt. kg
-------	---------	---------------	-------------	-------------	-----------	----------------	---------------------------------------	-------------	--------

### 80X80X25mm (Available upto 58 CFM) (Pack size: 200 No's)

8P24HBDC-X	Ball	24	0.085	3200	2.04	41	4.5	33	15
8P24HSDC-1X	Sleeve	24	0.110	3600	2.64	47	4.8	38	15
8P24HBDC-1X	Ball	24	0.110	3600	2.64	47	4.8	38	15
8P24HBDC-2X	Ball	24	0.140	4000	3.36	52	5.0	41	15

### 92X92X25mm (Available upto 65 CFM) (Pack size: 100 No's)

9P12HSDC	Sleeve	12	0.200	2500	2.40	55	5	40	12
9P12HBDC	Ball	12	0.200	2500	2.40	55	5	40	12
9P24HSDC	Sleeve	24	0.120	2500	2.88	55	5	40	12
9P24HBDC	Ball	24	0.120	2500	2.88	55	5	40	12

### 120X120X38mm (Available upto 240 CFM) (Pack size: 40 No's)

12P12HSDC	Sleeve	12	0.550	2700	6.6	105	8	45	11
12P12HBDC	Ball	12	0.550	2700	6.6	105	8	45	11
12P24HSDC	Sleeve	24	0.250	2700	6.0	105	8	45	11
12P24HBDC	Ball	24	0.250	2700	6.0	105	8	45	11
12P24HBDC-1X	Ball	24	0.400	3100	9.6	118	8.50	47	11
12P24HBDC-2X	Ball	24	0.60	3300	14.6	138	9.0	48	11
12P24HBDC-3X	Ball	24	0.80	4200	19.2	190	17.1	54.6	11

**Additional Features - Fan Failure Alarm ■ Alarm Signal For Speed Monitoring ■ PWM ■ Higher Air Flow ■ Non-standard voltages ■**

**Note:**

■ Weight mentioned is for the pack size.

■ 17A and 22A models available in square and round casings

## Compact Fans - DC Brushless



Model	Bearing	Voltage (VDC)	Current (A)	Speed (RPM)	Power (W)	Air Flow (CFM)	Static Pressure (mm H <sub>2</sub> O)	Noise (dBA)	Wt. kg
-------	---------	---------------	-------------	-------------	-----------	----------------	---------------------------------------	-------------	--------

12P48HBDC	Ball	48	0.125	2700	6.0	105	8	45	11
12P48HSDC	Sleeve	48	0.125	2700	6.0	105	8	45	11
12P48HBDC-1X	Ball	48	0.25	3100	12	118	8.50	47	11
12P48HBDC-2X	Ball	48	0.30	3300	14.4	138	9.0	48	11
12P48HBDC-3X	Ball	48	0.48	4200	23.0	190	17.1	54.6	11
12P48HBDC-4X	Ball	48	1.33	5500	63.8	285	47.1	69.5	11

### 172X150X51mm & 172X172X55mm (Available upto 282 CFM) (Pack size: 20 No's)

17A12HBDC	Ball	12	1.6	3000	19.2	210	13	58	15
17A24HBDC	Ball	24	0.75	3000	18.0	210	13	58	15
17A48HBDC	Ball	48	0.45	3000	21.6	210	13	58	15

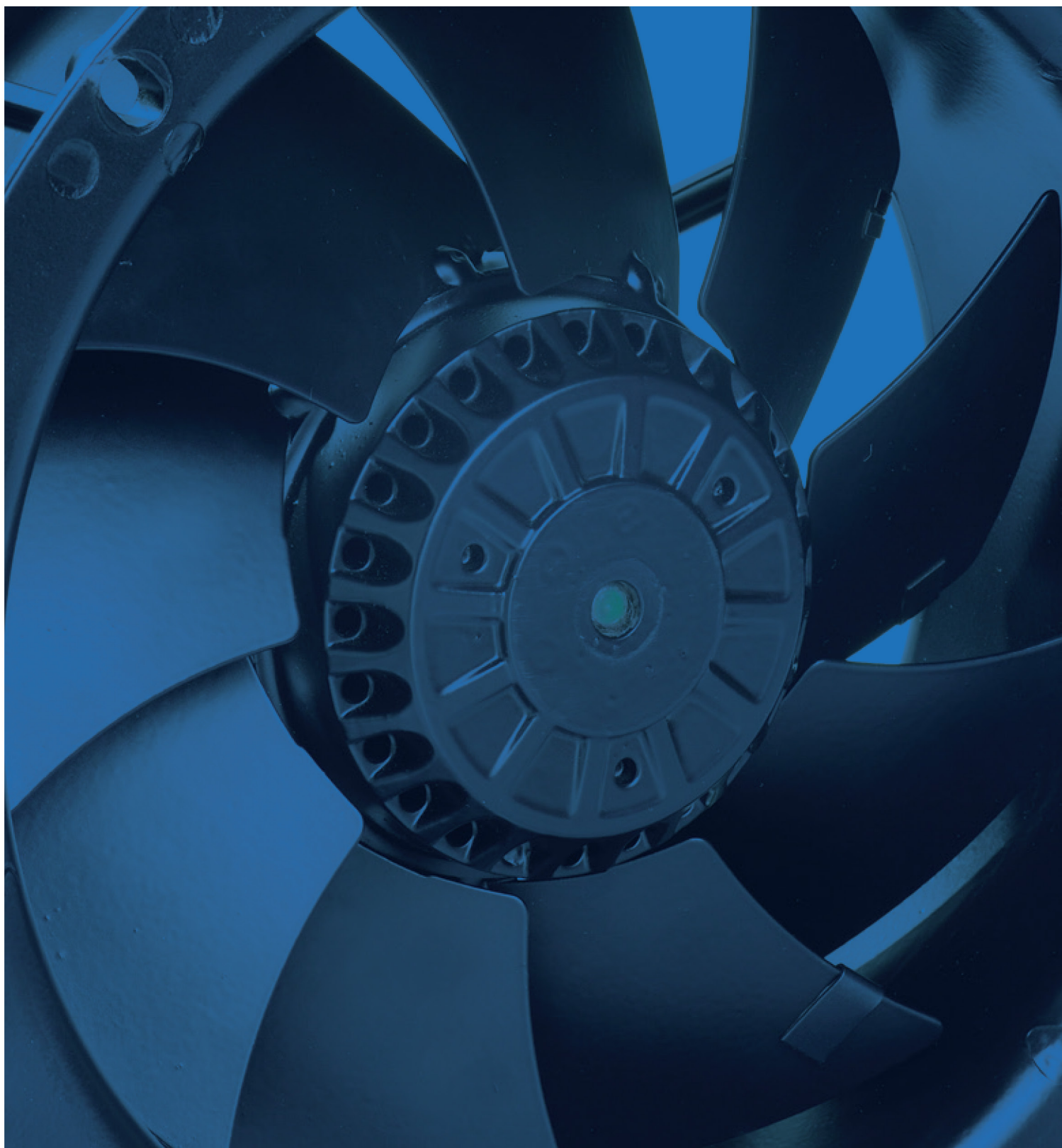
### 220ΦX60mm & 220X220X60mm (Pack size: 10 No's)

22A12HBDC	Ball	12	4.00	2900	48	400	28	62	11
22A24HBDC	Ball	24	1.50	2900	36	400	28	62	11
22A48HBDC	Ball	48	1.00	2900	48	400	28	62	11
22A24HBDC-S20	Ball	24	2.20	3000	52.8	641	24.5	68	11

**Additional Features - Fan Failure Alarm ■ Alarm Signal For Speed Monitoring ■ PWM ■ Higher Air Flow ■ Non-standard voltages ■**

**Note:**

- Weight mentioned is for the pack size.
- 17A and 22A models available in square and round casings





# Compact Fans - All Metal

## Compact Fans - All Metal



### AC Axial

Model	Bearing	Voltage (VAC)	Frequency (Hz)	Current (mA)	Speed (RPM)	Power (W)	Air Flow (CFM)	Static Pressure (mm H <sub>2</sub> O)	Noise (dBA)	Wt. kg
<b>120 x 120 x 38 mm - Metal (Pack size: 20 No's)</b>										
12A230HBAC-M	Ball	230	50/60	100/90	2700/3100	17/15	95/107	8.4/9.4	42/46	12
<b>172 x 150 x 55 mm - Metal (Pack size: 10 No's)</b>										
17A230HBAC-M	Ball	230	50/60	250/230	2800/3250	42/42	195/230	14/16	49/53	12
<b>225 x 225 x 80 mm - Metal (Pack size: 8 No's)</b>										
225A230HBAC-M	Ball	230	50/60	300/325	2500/2800	65/70	530/600	17/14	59/61	20
225A230HBAC-M-J	Ball	230	50	420	2750	82	600	18.7	60	20
<b>280 x 280 x 80 mm - Metal (Pack size: 6 No's)</b>										
280A230HBAC-M	Ball	230	50/60	590/820	2500/2700	119/130	1090/1130	16.5/20	68/70	21

Also available 115VAC & 415VAC

### DC Brushless

Model	Bearing	Voltage (VDC)	Current (mA)	Speed (RPM)	Power (W)	Air Flow (CFM)	Static Pressure (mm H <sub>2</sub> O)	Noise (dBA)	Wt. kg
<b>225 x 225 x 80 mm - Metal (Pack size: 6 No's)</b>									
225A48HBDC - M	Ball	48	1100	2850	52.8	647	25	67	20
<b>280 x 280 x 80 mm - Metal (Pack size: 6 No's)</b>									
280A48HBDC - M	Ball	48	1900	2700	91.2	1130	22	69	21

Note: Specifications subject to change without notice  
 ■ Weight mentioned is for the pack size.



### Corporate Headquarters

#### **Hicool Electronic Industries**

Plot No. A-104, TTC Industrial Area, MIDC,  
Khairne, Navi Mumbai - 400 710,  
Maharashtra, India.

Tel: +91 86575 52651

Email: sales@hicoolfans.com

### Basecamp

#### **Manufacturing Facility**

Gut No. 36/1 & 37, Near Talegaon MIDC,  
Jadhavwadi, Pune - 410 507, India.

